

HOW TO DRAW

ARTEMIS

NASA'S MOBILE LAUNCHER

MOBILE LAUNCH TOWER

40 FEET SQUARE, ABOUT 355 FEET TALL WITH TOWER FLOOR LEVELS EVERY 20 FEET FOR PERSONNEL ACCESS TO VEHICLE AND GROUND SUPPORT EQUIPMENT

CREW ACCESS ARM

AS ASTRONAUTS PREPARE FOR TRIPS TO DESTINATIONS BEYOND LOW-EARTH ORBIT, THEIR LAST STEPS BEFORE BOARDING ORION SPACECRAFT WILL BE ACROSS THE CREW ACCESS ARM (CAA) ON THE MOBILE LAUNCHER.

MOBILE LAUNCHER PLATFORM

STEEL STRUCTURE USED TO SUPPORT NASA'S SPACE LAUNCH SYSTEM SPACE VEHICLE WHICH IS ASSEMBLED (STACKED) VERTICALLY IN THE VEHICLE ASSEMBLY BUILDING (VAB) AND THEN TRANSPORTED TO LAUNCH PAD 39B. THIS PLATFORM REPRESENTS THE SUPPORT STRUCTURE FOR LAUNCH.



WE ARE GOING!

WITH THE **ARTEMIS** PROGRAM, NASA WILL LAUNCH THE FIRST WOMAN AND NEXT MAN TO THE MOON BY 2024, USING INNOVATIVE TECHNOLOGIES TO EXPLORE MORE OF THE LUNAR SURFACE THAN EVER BEFORE.

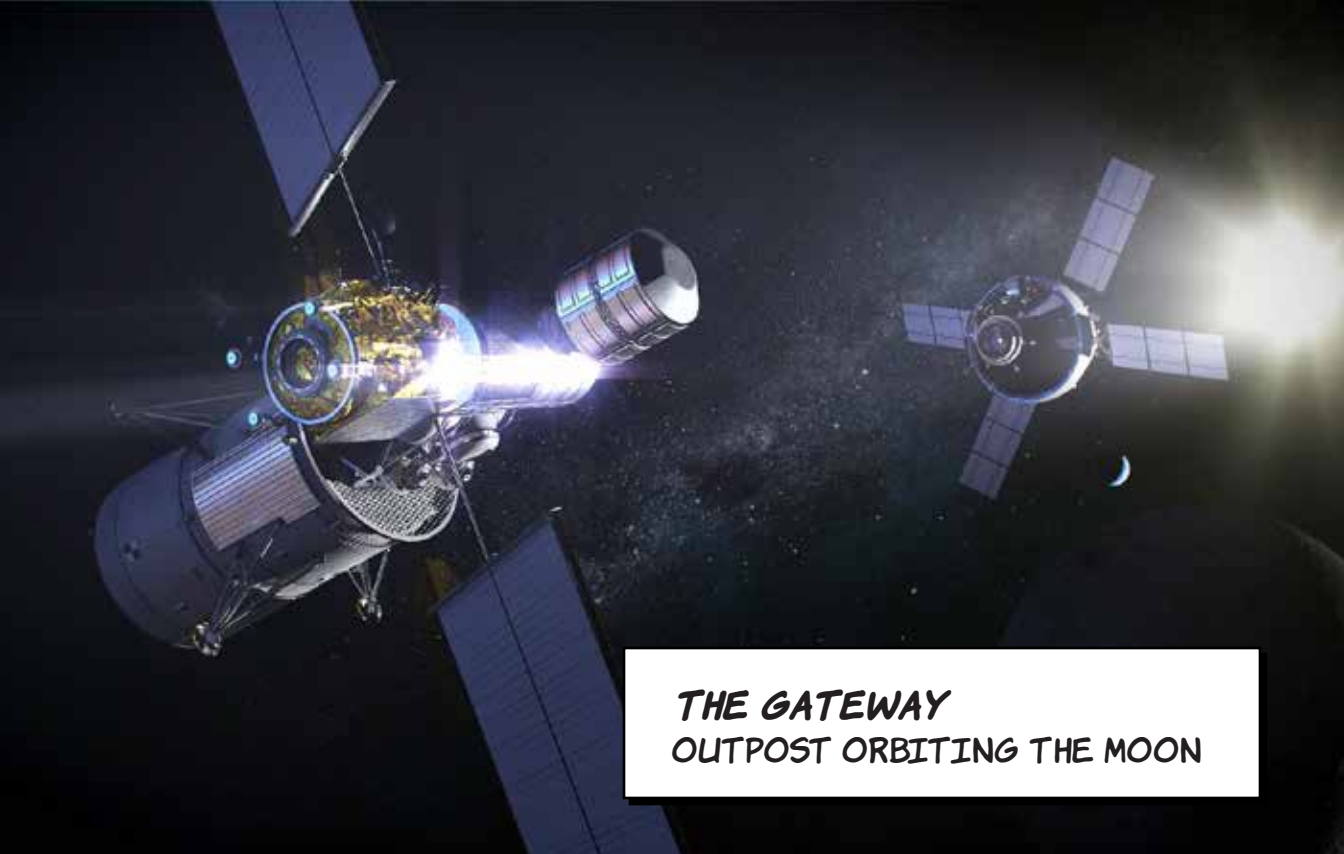
LEARN MORE:
[NASA.GOV/ARTEMIS](https://www.nasa.gov/artemis)



THE SPACE LAUNCH SYSTEM
WORLD'S MOST POWERFUL ROCKET



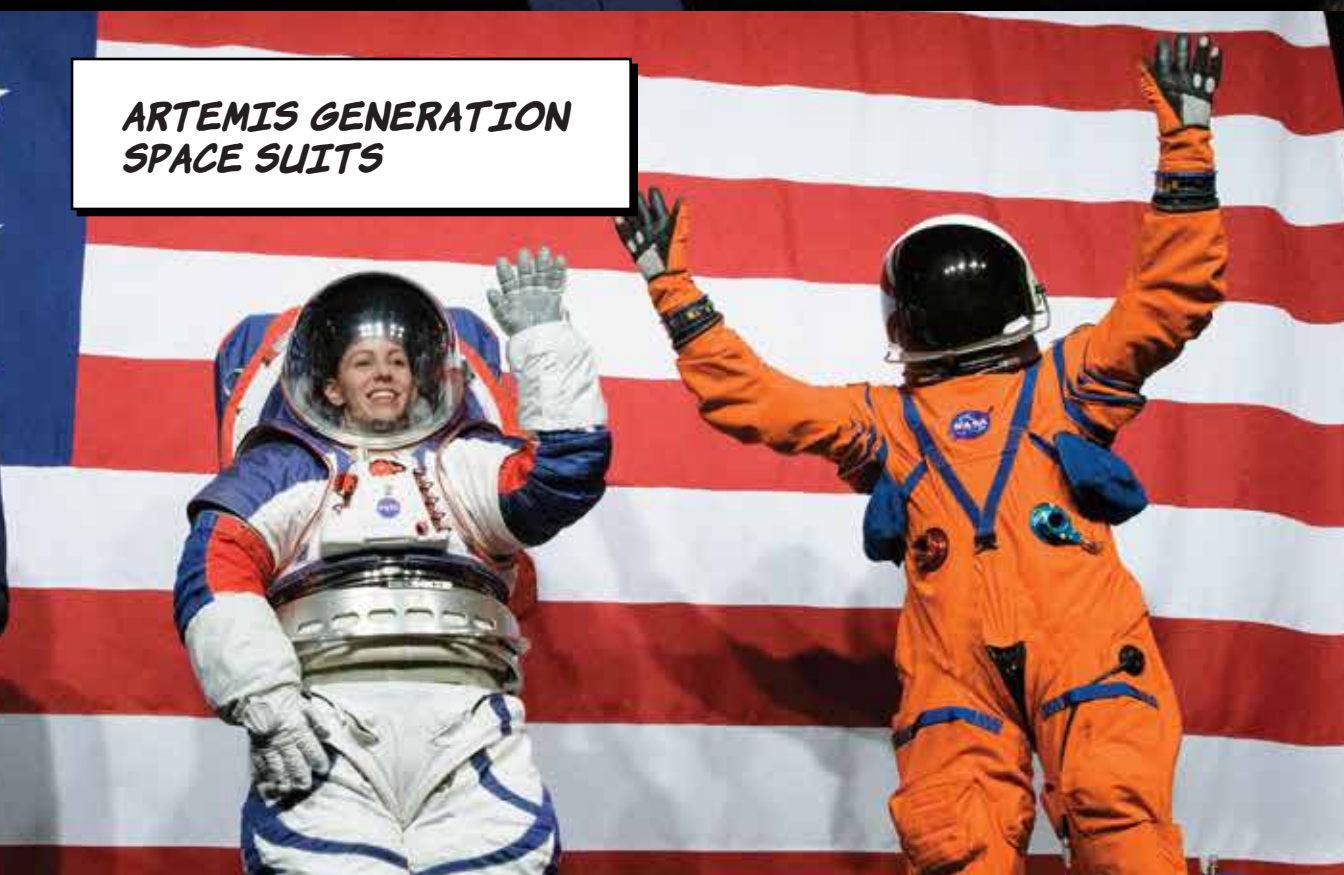
THE GATEWAY
OUTPOST ORBITING THE MOON



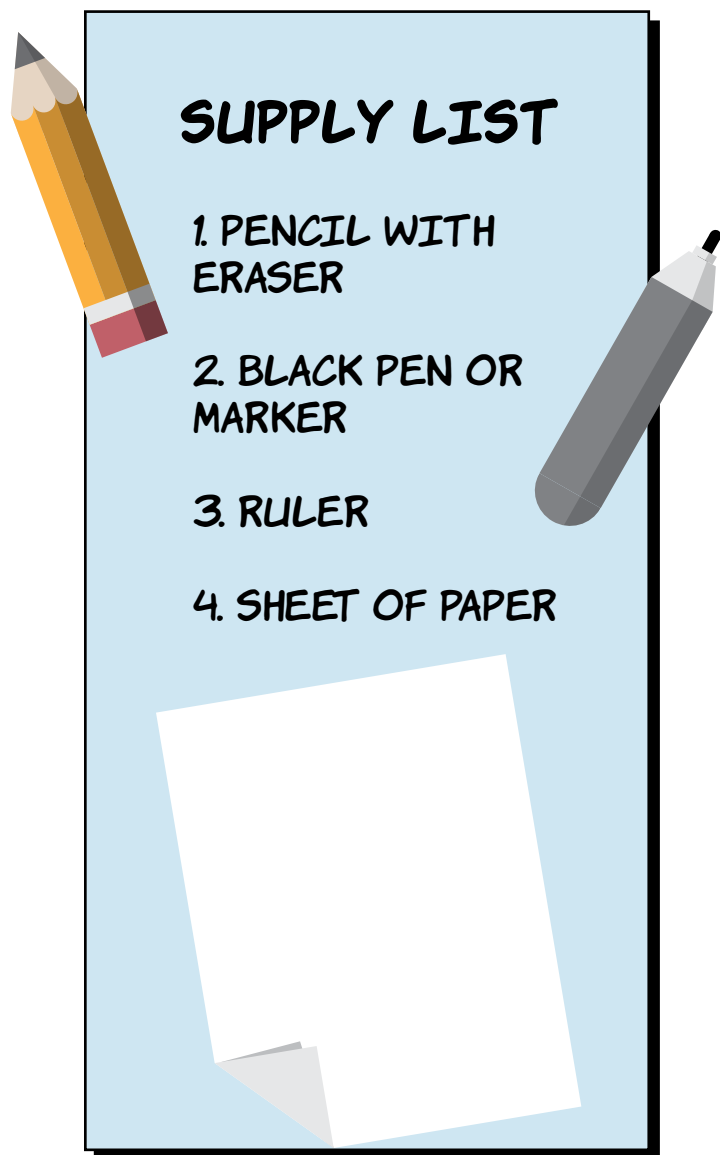
ORION SPACECRAFT
DESIGNED FOR DEEP SPACE



ARTEMIS GENERATION
SPACE SUITS

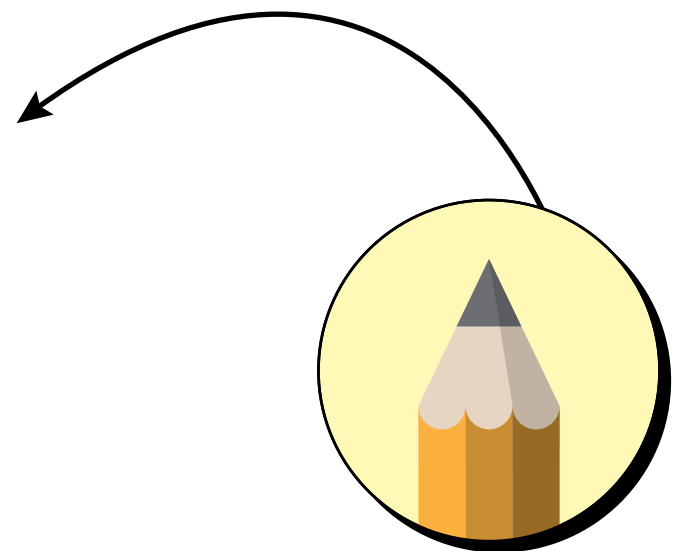


1. LET'S DRAW THE MOBILE LAUNCHER!

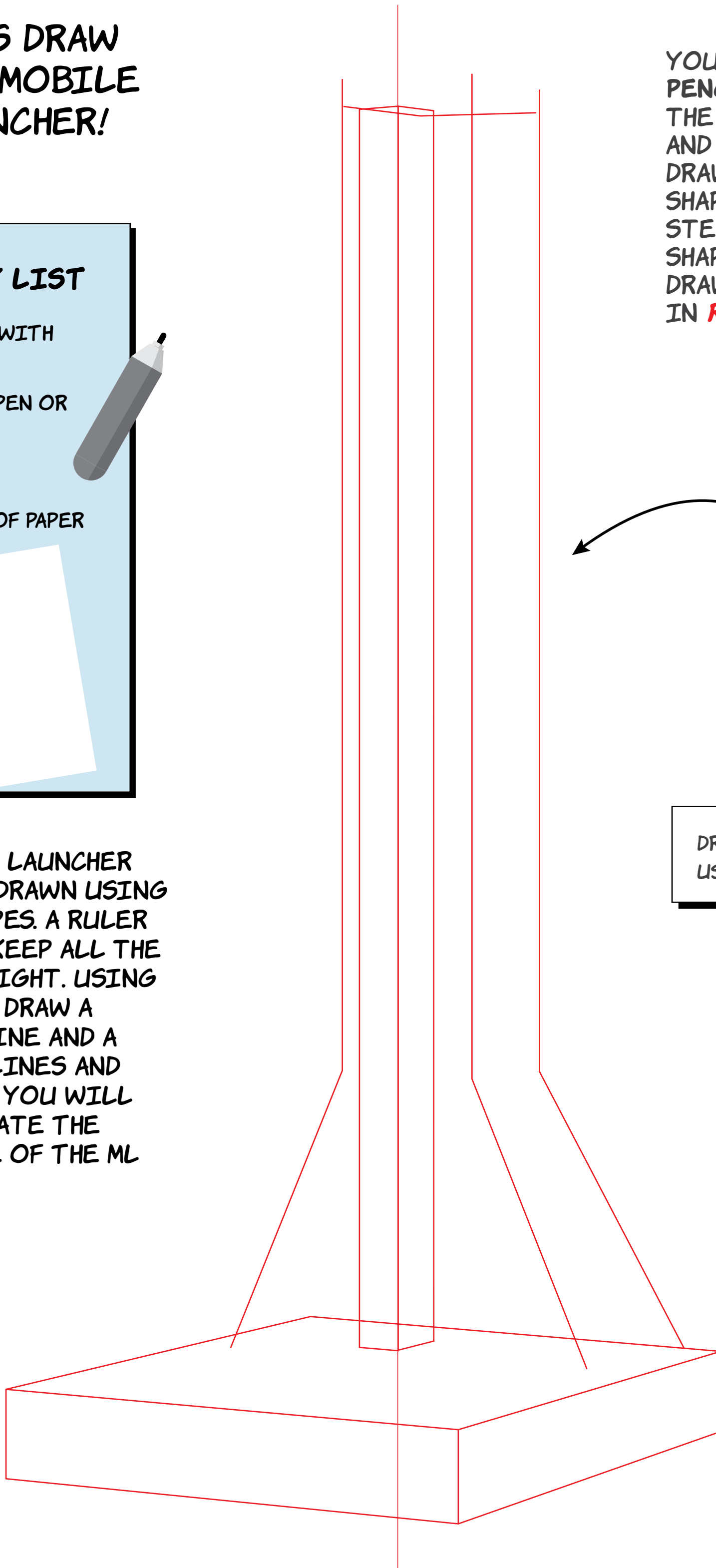


THE MOBILE LAUNCHER (ML) CAN BE DRAWN USING SIMPLE SHAPES. A RULER WILL HELP KEEP ALL THE LINES STRAIGHT. USING THE PENCIL, DRAW A VERTICAL LINE AND A SERIES OF LINES AND BOXES THAT YOU WILL USE TO CREATE THE BASIC SHAPE OF THE ML STRUCTURE.

YOU WILL USE THE PENCIL TO DRAW THE GUIDELINES AND THE MARKER TO DRAW THE FINAL SHAPES. FOR EVERY STEP, THE CURRENT SHAPES TO BE DRAWN ARE SHOWN IN **RED**.



DRAW THESE LINES USING A PENCIL

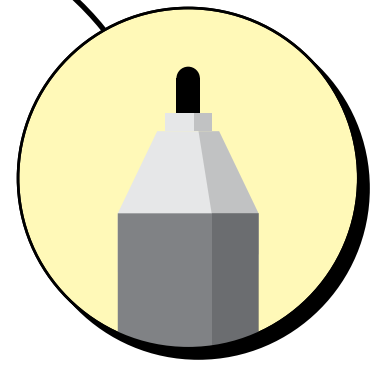
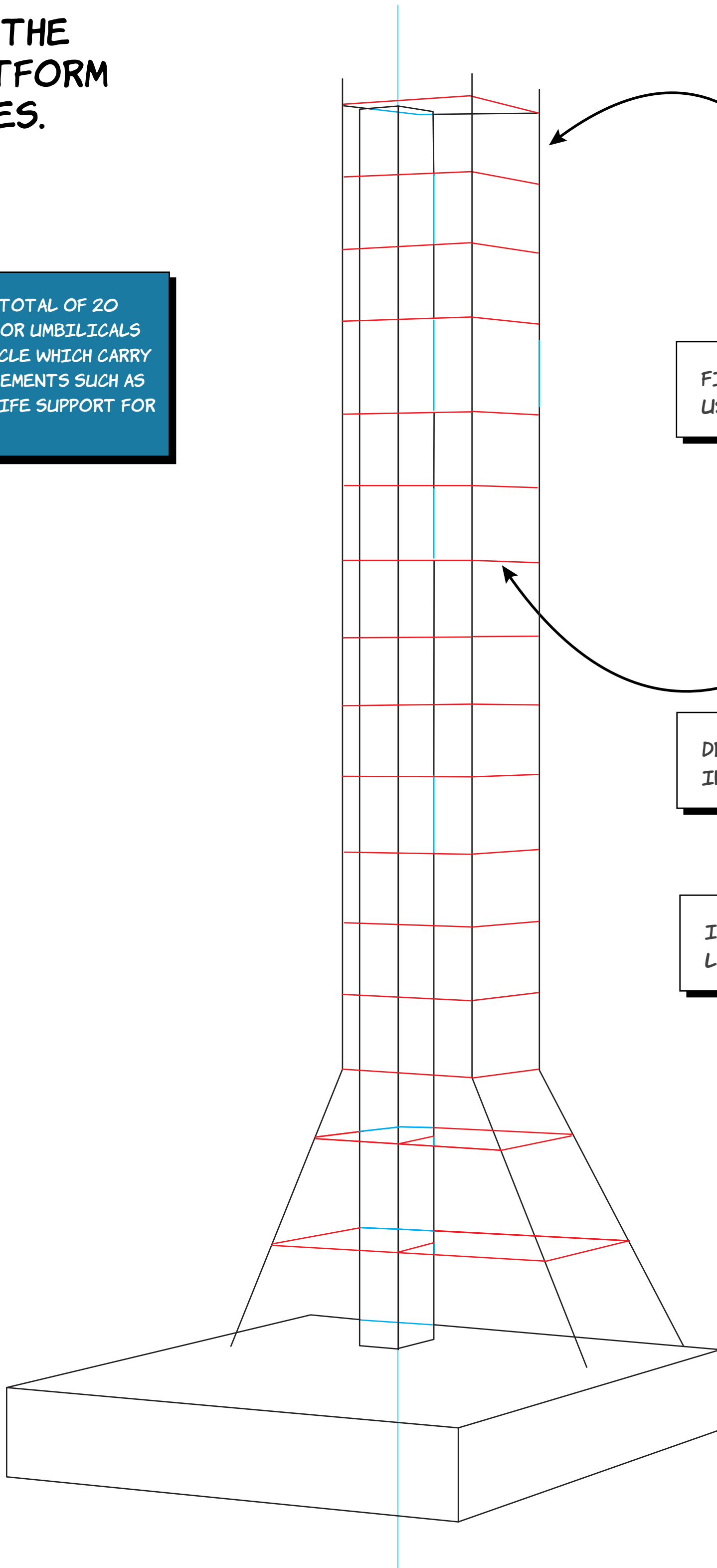


2.

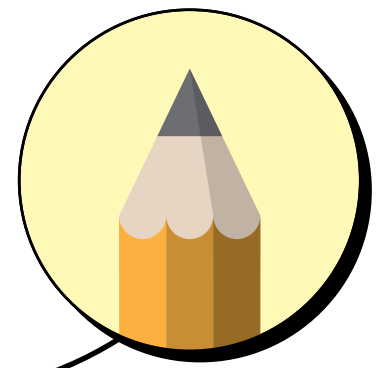
ADD THE PLATFORM LINES.

FUN FACT

THERE ARE A TOTAL OF 20
INTERFACES OR UMBILICALS
TO THE VEHICLE WHICH CARRY
CRITICAL ELEMENTS SUCH AS
POWER AND LIFE SUPPORT FOR
THE CREW.



FILL IN BLACK LINES
USING A **BLACK PEN**

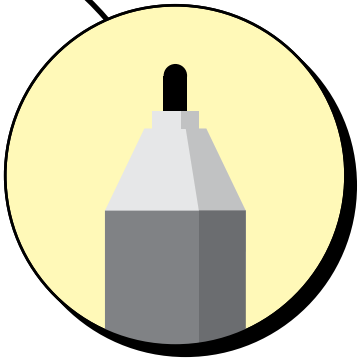
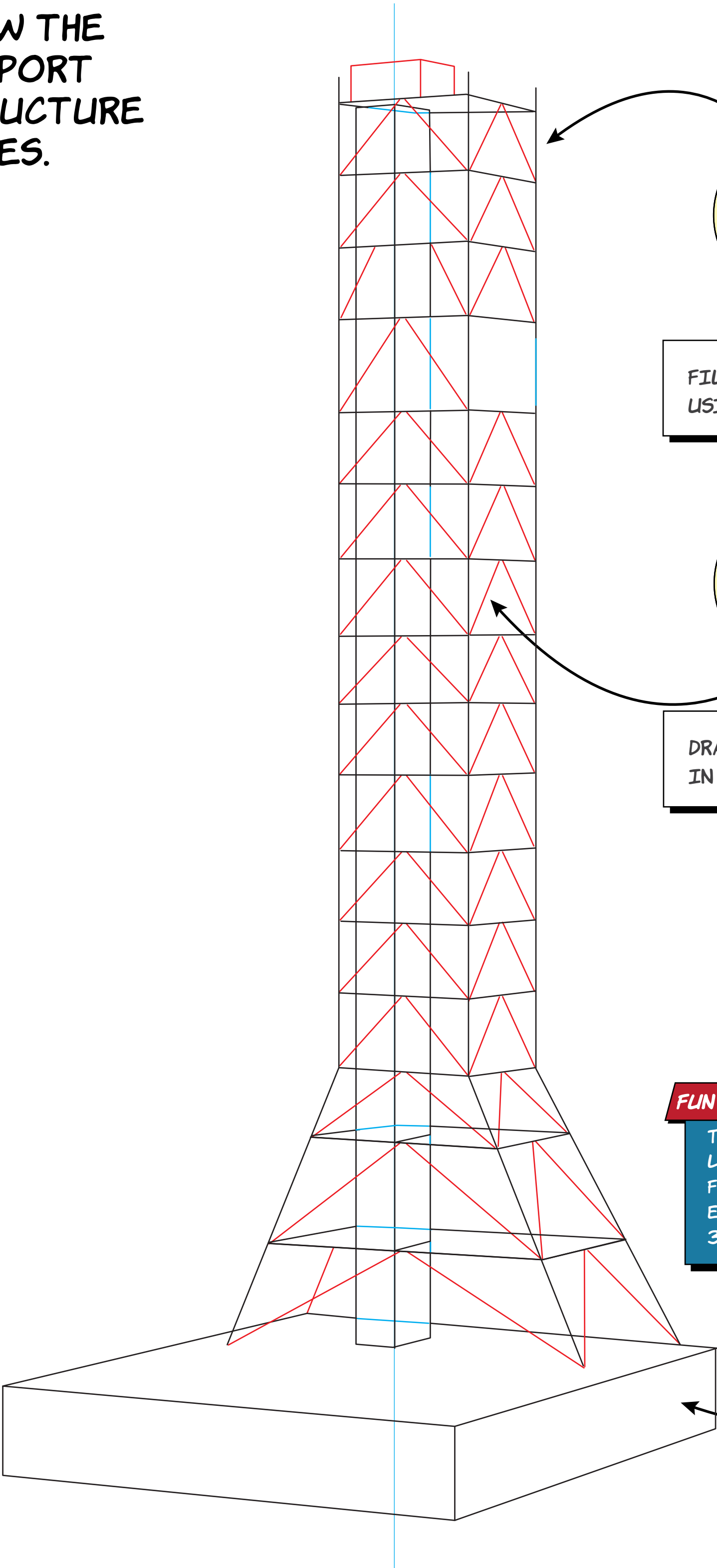


DRAW NEW RED LINES
IN **PENCIL**

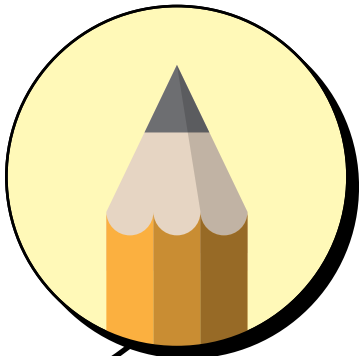
IGNORE THE BLUE
LINES FOR NOW.

3.

DRAW THE
SUPPORT
STRUCTURE
LINES.



FILL IN BLACK LINES
USING A **BLACK PEN**

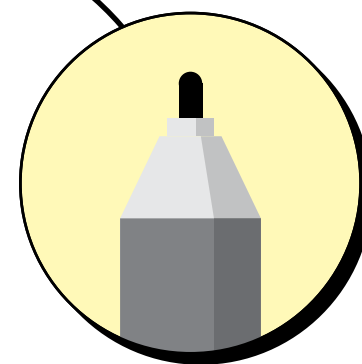
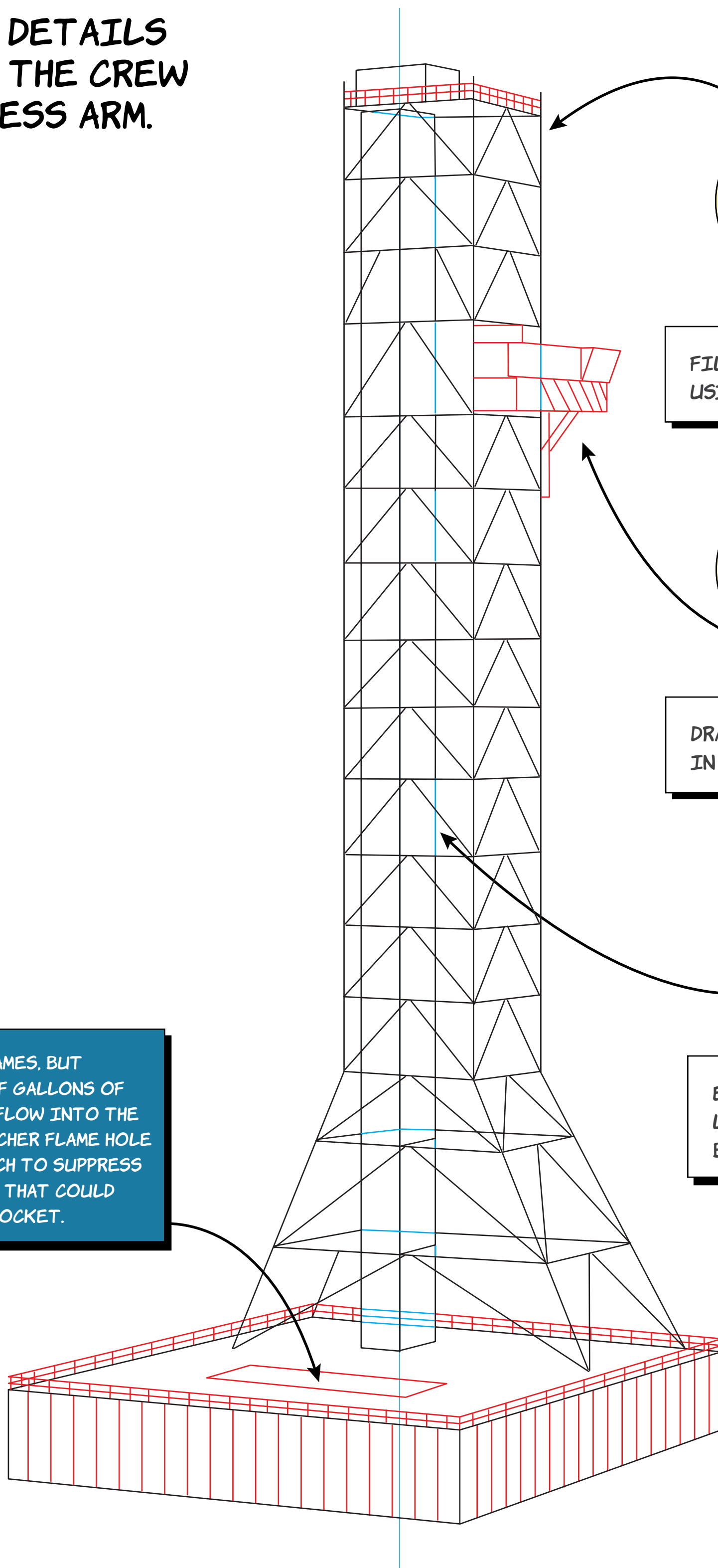


DRAW NEW RED LINES
IN **PENCIL**

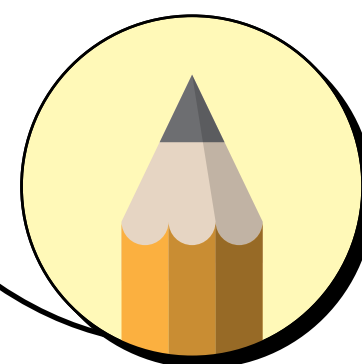
FUN FACT

THE BASE OF THE MOBILE
LAUNCHER IS 20600 SQUARE
FEET OF FLOOR SPACE,
EQUIVALENT TO 10
3-BEDROOM HOUSES!

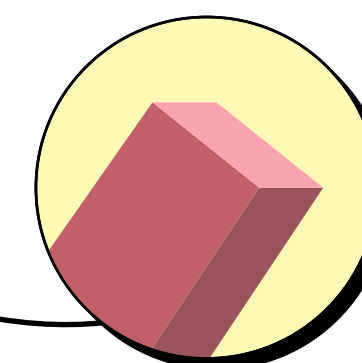
4. ADD DETAILS AND THE CREW ACCESS ARM.



FILL IN BLACK LINES
USING A **BLACK PEN**



DRAW NEW RED LINES
IN **PENCIL**

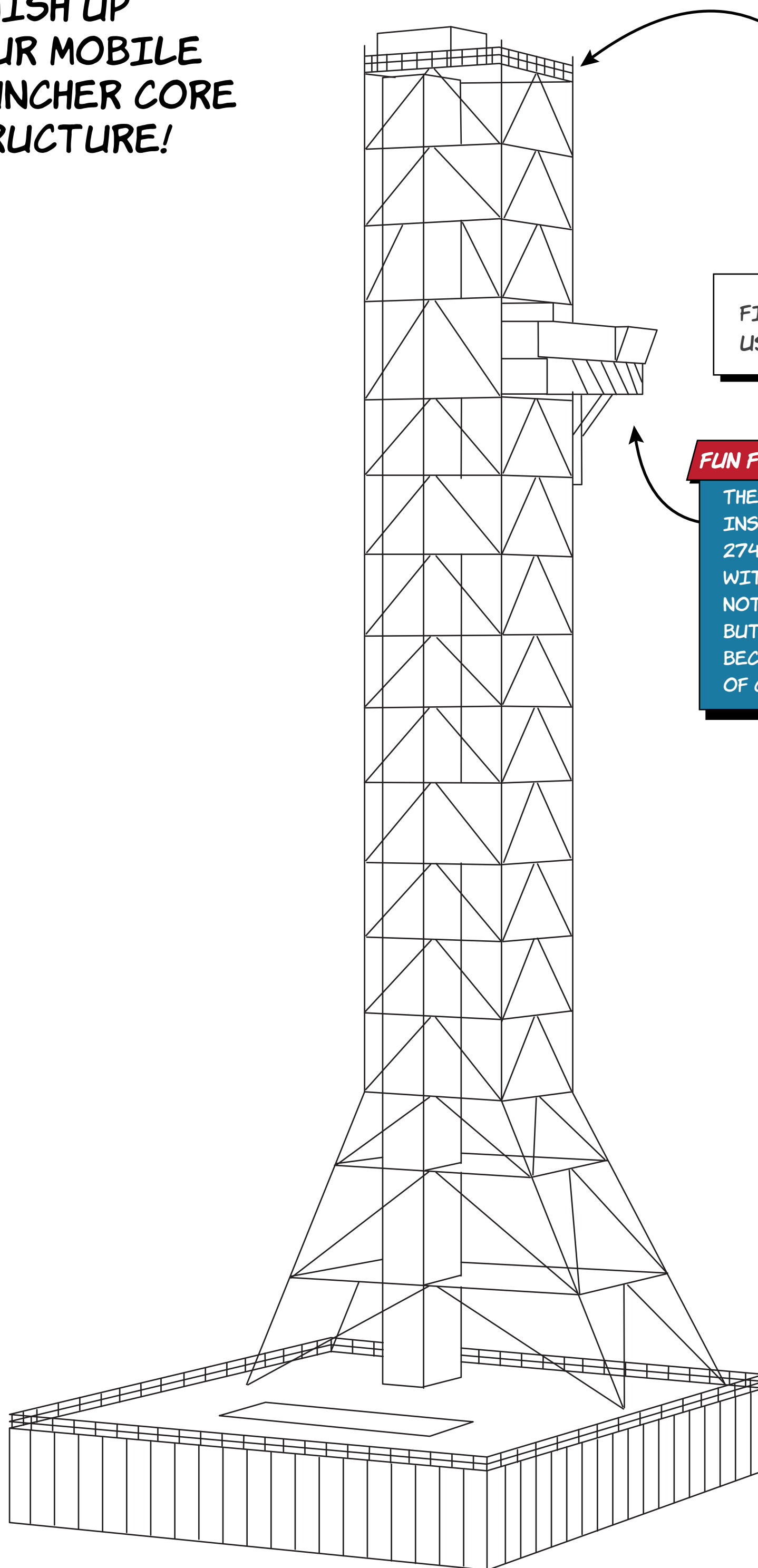


ERASE THE **PENCIL**
LINES (SHOWN IN
BLUE)

FUN FACT

NOT ONLY FLAMES, BUT
THOUSANDS OF GALLONS OF
WATER WILL FLOW INTO THE
MOBILE LAUNCHER FLAME HOLE
DURING LAUNCH TO SUPPRESS
SOUND WAVES THAT COULD
DAMAGE THE ROCKET.

5. FINISH UP YOUR MOBILE LAUNCHER CORE STRUCTURE!



FILL IN BLACK LINES
USING A **BLACK PEN**

FUN FACT

THE CREW ACCESS ARM IS
INSTALLED AT ABOUT THE
274-FOOT LEVEL AND ENDS
WITH A WHITE ROOM. THIS IS
NOT ONLY PAINTED WHITE,
BUT IT IS GIVEN THE NAME
BECAUSE IT IS KEPT CLEAN
OF CONTAMINANTS.

6. FILL OUT THE MAIN STRUCTURE LINES.

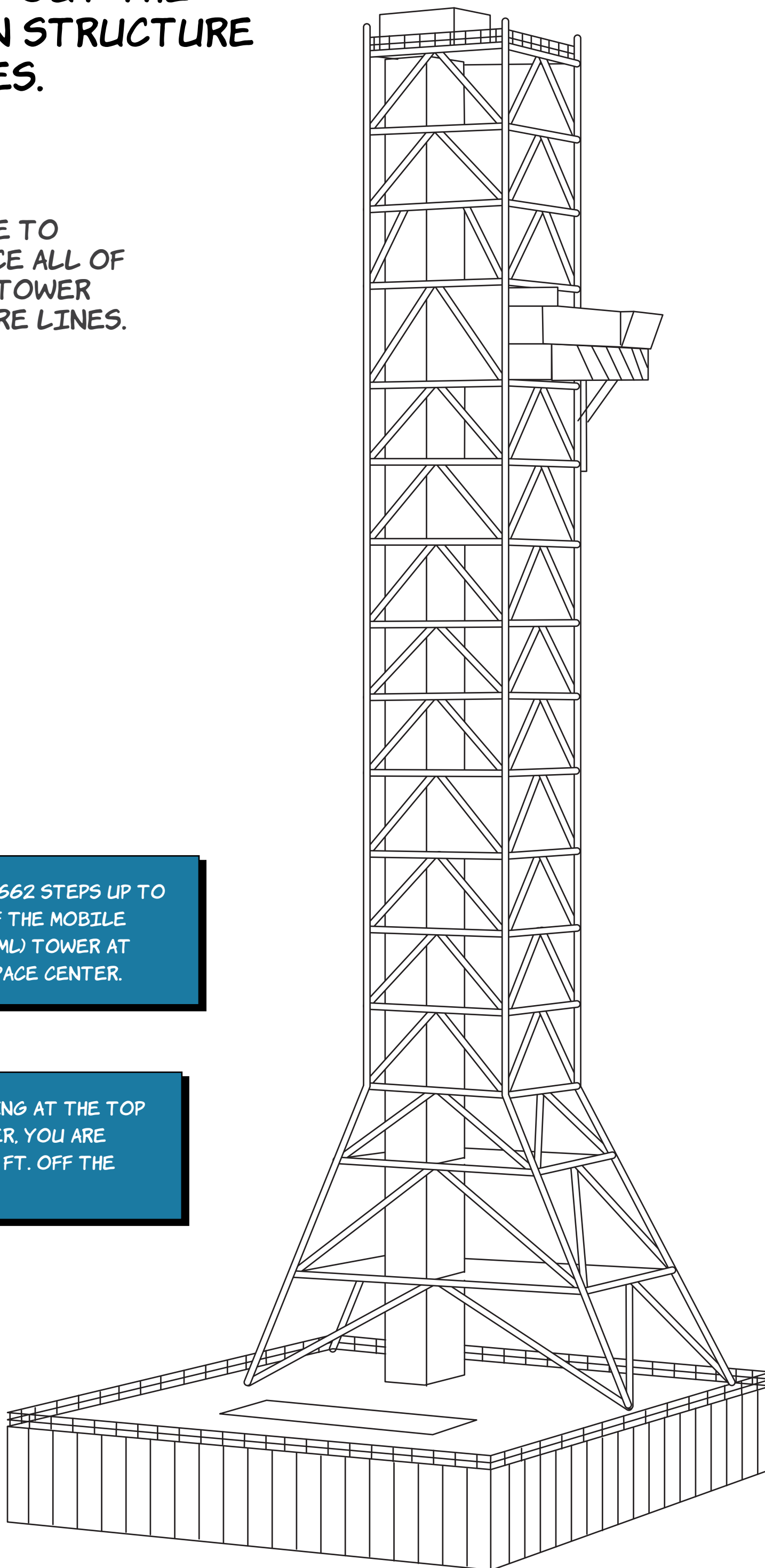
FEEL FREE TO REINFORCE ALL OF YOUR ML TOWER STRUCTURE LINES.

FUN FACT

THERE ARE 662 STEPS UP TO THE TOP OF THE MOBILE LAUNCHER (ML) TOWER AT KENNEDY SPACE CENTER.

FUN FACT

WHEN STANDING AT THE TOP OF THE TOWER, YOU ARE APPROX. 400 FT. OFF THE GROUND!



7.

FINISH & SHARE YOUR WORK OF ART!

NOW GET CREATIVE! ADD
THE ML'S UNIQUE RED
PIPING. DRAW STARS AND
THE MOON.

ADD NASA'S **SPACE LAUNCH
SYSTEM ROCKET** ONTO
THE ML PLATFORM. MAKE
IT LAUNCH!

DON'T FORGET TO SHARE
YOUR MASTERPIECE ON
SOCIAL MEDIA!

#DRAWARTEMIS

